



Ph: 4953 0748
 Fax: 4953 0768
 Email: sales@storeright.com.au

StoreRight Pty Ltd
 Cnr Chain & Victoria Streets
 Mackay Qld 4740



Solid Fibreboard Storage Boxes

- 🔔 **Recycled & Recyclable Solid Durafibre**
- 🔔 **Long Lasting**
- 🔔 **More Fire Resistant**
- 🔔 **Optional Lids cut rust, Dust and Corrosion**
- 🔔 **Fit Standard Metal Shelves**

Your Durabox with lid seals your stock from the atmosphere while its natural fibres breathe like leather to retard corrosion and exclude dust.



- Standard Durabox contents parts boxes are made from 1.8 mm thick solid fibre board
- Durafibre board is 20%-30% more dense than ordinary box boards and to you this means:
 1. Tougher, stronger boxes,
 2. Greater fire resistance,
 3. Greater moisture and oil resistant,
 4. Longer life -better investment.

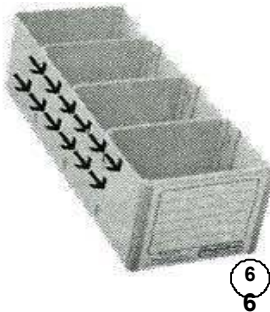
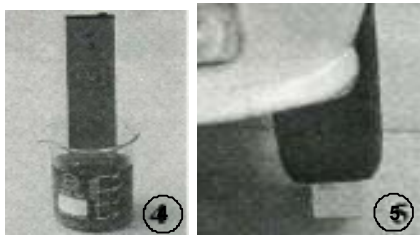
Better Fire Rating



Here's what happened when a heavy duty blowtorch was focussed on 3 common materials

1. Corrugated Box - 5 to 10 seconds and it kept flaming/burning.
2. Plastic - 20 to 30 seconds burst into continuing flaming/burning
3. Durabox - 30 to 45 seconds glowed red, smoked and died back once torch removed.

Tested Quality



4. Durafibre acid test because acidity greatly shortens board life,
5. Is that a Durabox under the car? Yes-it did gradually collapse but proved it could take the load first.
6. Shows grain direction. A Feature often overlooked.
Durabox knows the correct grain makes a stronger box.

Durabox Accessories



DBLABLE-RL50

Self adhesive box front label.
82W x 85Hmm, Roll of 50



Lids to protect from dust, humidity and corrosion

Quality Features Built In



Above : wide steel " Strap-Staples" hold box together under tough loads.
Left : (arrowed) security flap on bottom of dividers stops small parts sliding underneath to next compartment.



Solid Fibreboard Storage Boxes



Boxes - without Dividers and Lid							Lids Only	Dividers
Part Number	Size (mm)			No. of Dividers	Carton Quantity		Part Number	Part Number
	L	W	H		without Dividers	with Dividers		
# DB1233	300	75	75	0 - 4	180	120	# DB1233LID	# DB1233DIV
# DB1244	300	100	95	0 - 4	100	80	# DB1244LID	# DB1244DIV
# DB1254	300	140	95	0 - 4	80	56	# DB1254LID	# DB1254DIV
# DB1284	300	200	95	0 - 4	58	40	# DB1284LID	# DB1284DIV
# DB12114	300	280	95	0 - 4	38	24	# DB12114LID	# DB12114DIV
# DB12124	300	300	95	0 - 4	38	24	# DB12124LID	# DB12124DIV
# DB1544	380	100	95	0 - 5	88	60	# DB1544LID	# DB1544DIV
# DB1554	380	140	95	0 - 5	66	44	# DB1554LID	# DB1554DIV
# DB1584	380	200	95	0 - 5	54	30	# DB1584LID	# DB1584DIV
# DB15114	380	280	95	0 - 5	36	20	# DB15114LID	# DB15114DIV
# DB15124	380	300	95	0 - 5	36	20	# DB15124LID	# DB15124DIV
# DB1844	450	100	95	0 - 5	77	48	# DB1844LID	# DB1844DIV
# DB1854	450	140	95	0 - 5	60	36	# DB1854LID	# DB1854DIV
# DB1884	450	200	95	0 - 5	45	24	# DB1884LID	# DB1884DIV
# DB18114	450	280	95	0 - 5	30	16	# DB18114LID	# DB18114DIV
# DB18124	450	300	95	0 - 5	30	16	# DB18124LID	# DB18124DIV
# DB2044	500	100	95	0 - 5	64	45	# DB2044LID	# DB2044DIV
# DB2054	500	140	95	0 - 5	48	30	# DB2054LID	# DB2054DIV
# DB2084	500	200	95	0 - 5	37	22	# DB2084LID	# DB2084DIV
# DB20114	500	280	95	0 - 5	27	15	# DB20114LID	# DB20114DIV
# DB20124	500	300	95	0 - 5	27	15	# DB20124LID	# DB20124DIV
# DB2444	600	100	95	0 - 7	60	40	# DB2444LID	# DB2444DIV
# DB2454	600	140	95	0 - 7	45	28	# DB2454LID	# DB2454DIV
# DB2484	600	200	95	0 - 7	33	20	# DB2484LID	# DB2484DIV
# DB24114	600	280	95	0 - 7	21	12	# DB24114LID	# DB24114DIV
# DB24124	600	300	95	0 - 7	21	12	# DB24124LID	# DB24124DIV

Filing Boxes Suit A4 loose sheets & Manila folders - Includes LID

Part Number	Size (mm)			No. of Dividers	Carton Quantity
	L	W	H		
# SB15111	390	295	270	-	6
# SB14104	360	250	100	-	35
# SB1294	300	230	100	-	25
# SB15510	390	150	260	-	12

Filing Boxes Pigeonhole/magazine segregator

Part Number	Size (mm)			No. of Dividers	Carton Quantity
	L	W	H		
# SB1526	375	65	155	-	54
# SB1539	375	70	220	-	48

Self adhesive box front label - One side only

Part Number	Size (mm)
# DBLABEL-RL50	82W x 85Hmm, Roll of 50



SB15111
Archive box with lid



SB15510
Hinged lid Filing Box



#SB1294
(#SB14104 not shown)
Filing Boxes Includes LID



#SB1526



#SB1539

Filing Boxes Open Top